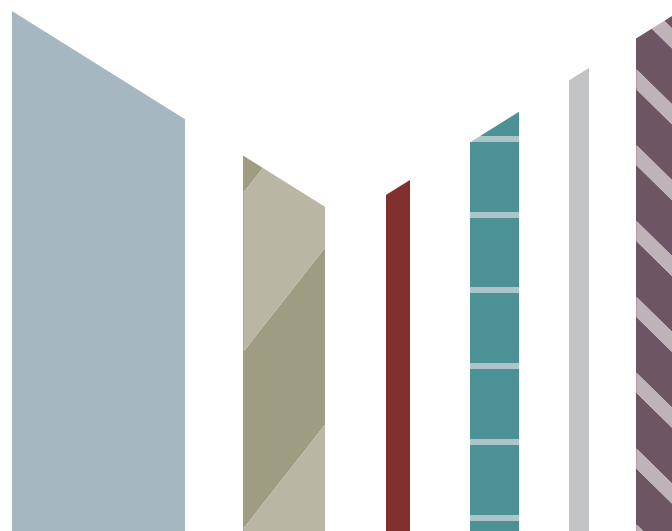


A PRODUCT FOR EVERY PROJECT

FOME-COR® **GP****APEX™** **SMART-X®**
SINTRA® **DIBOND®** **GATORFOAM®**
DISPA® **POLAR™** **SWEDBOARD®**



Print Optimized Light And Recyclable



POLAR™ is a paper board with a honeycomb core and bright white, clay-coated facers. The rigid core ensures flatness, while the premium facers prevent read-through lines and create a smooth surface ideal for direct printing. Available in three thicknesses and two core colors, POLAR provides a rigid & recyclable solution for short- to medium-term displays.

Advantages with POLAR

- **Optimized for direct printing** - coated papers provide accurate ink placement
- **Lightweight with very good rigidity & stability ideal for free-standing displays**
- Flexible facers allow for V-routing & bending to create 3D displays
- Easily cut with manual or CNC cutters
- Suitable for double-sided printing
- Specialty paper prevents "read through" from the core
- Available with a white or natural paper core
- 100% recyclable - for short-medium term use

Please visit our website for product availability



For free-standing POP displays, event signage, & tradeshow booth construction.

SWEDBOARD® FIBRE

The 100% Recyclable, Premium Paper Board for Advanced Structural & Load Bearing Applications



SWEDBOARD® FIBRE is a lightweight yet ultra-rigid paper board engineered for exceptional strength and stability. Its premium white facers feature a coating that provides vivid direct print results and acts as a thin moisture barrier to keep panels flat in dry or humid conditions. Fully recyclable, it's a durable solution for structural, long-term POP/POS, and in-store display applications.

Advantages with SWEDBOARD FIBRE

- **Incredible rigidity & load-bearing performance**
- **Very good resistance to moisture & warping**
- Premium facers deliver excellent direct printing results
- Ideal for heavy duty display applications
- Unique core structure creates a strong, stable board
- Can be V-cut and folded for dimensional displays
- Dust-free core for clean & efficient fabrication
- 100% recyclable - for long term use

Please visit our website for product availability



Load bearing compressive strength 80 tons per sqm



Perfect for creative furniture & fixtures

100% Paper - 100% Recyclable - 100% Unique



Top Left: Printed & fabricated for tradeshow exhibition



Top/Bottom Right: Recyclability makes DISPA ideal for short-term, promotional displays



DISPA® is a 100% paper board with smooth, clay-coated facers that offer excellent direct printing results. The unique structure of the core makes it lightweight yet dimensionally stable, and prevents distracting "read-through" lines that occur with alternative corrugated medias. Combined with its easy fabrication and recyclability, DISPA is ideal for short term interior displays.



Advantages with DISPA

- Specialty papers provide a smooth, coated surface for superior direct print results
- Extremely lightweight & stable, ideal for hanging signs that won't warp
- Unique German-engineered core preventing read-through and warping
- Extremely lightweight with good dimensional stability
- Easy fabrication using CNC, die cutting, or drag knife
- Provides 2-sided printing capability
- 100% recyclable - for short term use

Please visit our website for product availability



NEW! 5mm DISPA®

- Now in 3/16" thickness for ready use in standard retail signage & frames
- No trade-offs: Superior performance in a 100% recyclable paper board

SMART-X®

Engineered for exterior signage & 100% recyclability

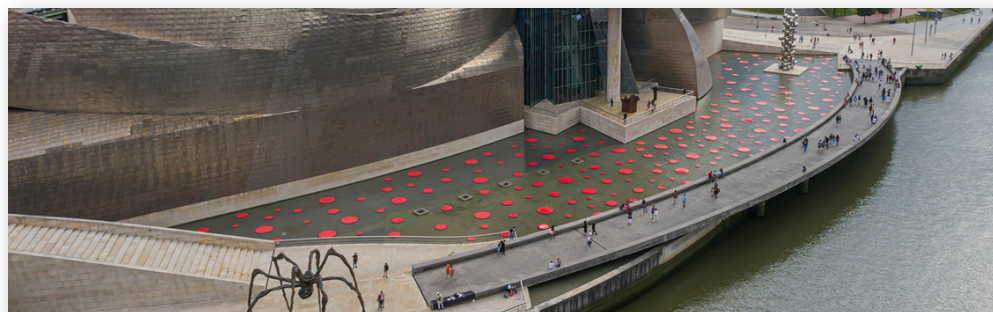
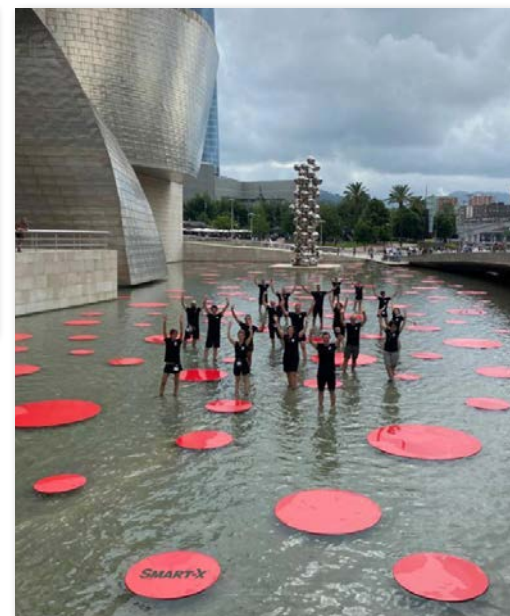


SMART-X® is a lightweight, fully recyclable foam board with UV- & weather-resistant facers and a moisture-resistant PS core — **perfect for long-term outdoor use**. Its high strength-to-weight ratio makes it rigid yet lightweight, and the premium white polystyrene facers provide impressive direct printing results with vivid colors and accurate ink placement.

Advantages with SMART-X

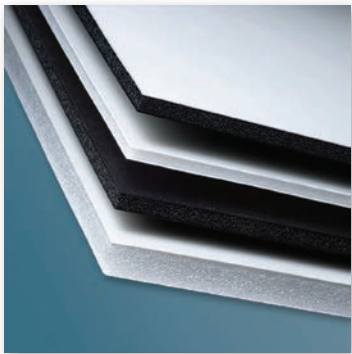
- Can be used in exterior applications for up to 2 years
- Smooth surfaces allow for precise ink placement & vivid graphics
- High UV stability and moisture resistance
- Very good impact and scratch resistance
- Extremely rigid and light weight
- Plastic surfaces are ideal for applying vinyl graphics
- 100% recyclable - for medium - long term use

Please visit our website for product availability



High UV stability & moisture resistance makes SMART-X perfect for outdoor applications or in other areas with high exposure to UV lighting.

The Original Graphic Arts Foam Board - Trusted for 60+ Years



FOME-COR® is a foam board that features bright white, clay-coated paper facers for sharp direct print results. Lightweight, easy to fabricate, & highly printable, it's the go-to choice for short-term interior displays. The collection also includes a variety of specialized papers that lend to mounting and framing applications.

Through a proprietary manufacturing process, FOME-COR is engineered for superior performance in both pillowing and non-pillowing foam cores. Made in the USA.

Advantages with FOME-COR

- Provides excellent direct print results for high-quality, short term graphics
- Perfect for die cutting with a compressed edge that stays closed
- Pillowing foam is uniquely embossable for 3-dimensional surface effects
- Cuts easily and cleanly, even using hand tools
- Extremely lightweight with good dimensional stability
- Quick service on cut-to-size orders, including large sheets up to 8'x10'

Please visit our website for product availability

The FOME-COR Collection

FOME-COR with ENCORE Technology | Recovery Performance Reimagined

- Specially formulated **non-pillowing foam** with bright white coated or black uncoated facers. Ideal for die cutting with open, clean edges.

FOME-COR JETMOUNT | Demand More From Foam Board

- **Denser foam core**, great for freestanding displays & demanding mounting applications.

FOME-COR FOUNDATION | Your Base For Superior Framing & Mounting

- High-quality **acid-free facers** provide a flat, smooth surface for superior mounting & framing with no read-through lines.

FOME-COR CANVAS | Amplify Your Art

- Deep **embossed textured facers** create a more artistic, high-end appearance without adding cost or weight.

FOME-COR SINGLESTEP | Heat-Activated Mounting Made Easy

- FOME-COR with one facer that's been coated with a **heat-activated adhesive** for a more efficient mounting process - no need for hot melt tissue stock.

FOME-COR QUICKSTIK | Peel & Place With Precision

- FOME-COR with one side offering a **pressure-sensitive release facer** for easy peel & stick mounting. Available in high-tack and low-tack.

Please visit our website for complete product availability



A variety of specialized papers are available that lend to mounting & framing applications.



Uniquely "embossable" for dimensional effects



FOME-COR CANVAS, embossed textured facers:
Above photo courtesy of HP



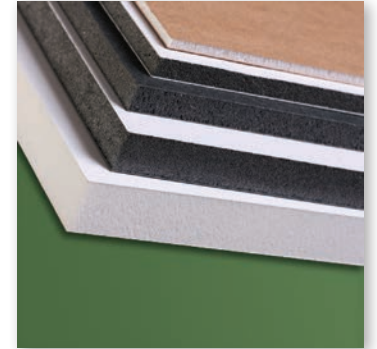
Ideal for printing with sharp lines & clear text

Unmatched Rigidity, Proven Dependability



Hanging store displays utilize GATORFOAM for its thick gauge & lightweight properties.

GATORFOAM® - the high performance foam board trusted for 30+ years. With a rigid foam core and durable bright white facers, GATORFOAM delivers the highest strength to weight ratio, very good print quality, and excellent dimensional stability — perfect for displays that demand long-lasting performance. Made in the USA.



Advantages with GATORFOAM

- **Wood-fiber veneers provide extreme rigidity** - excellent for mounting
- Smooth facers provide a flat surface for impressive printing results
- **Extremely lightweight with high dimensional stability** - no warping or bowing
- Excellent dent and scratch resistance
- Routs and cuts cleanly for easy fabrication
- Available with a self-adhesive facer; great for permanent mounting applications

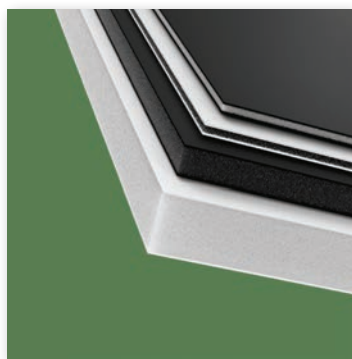
Please visit our website for complete product availability



Self-adhesive version utilized for efficient mounting of large scale panoramic photo prints in exhibition.
Installation view of *Cruise Control*
Photo © Artist Charlie Tadlock



The Peak of Graphic Performance



NEW! GP APEX™ is a high performance plastic-faced foam board offering exceptional surface consistency, flatness, & rigidity to deliver striking direct print results. Its smooth facers allow for accurate ink placement creating more vibrant colors, resist warping and moisture, and are ideal for vinyl graphics and precision fabrication. Made in the USA

Advantages with GP APEX

- **Offers superior surface consistency for accurate ink placement, delivering clear prints & vibrant colors**
- **Flexible plastic facers enable enhanced fabrication capabilities**
- V-rout & fold with no edge cracking to create 3D-displays
- Smooth surfaces deliver crystal clear print results
- Routs and cuts cleanly for easy and efficient fabrication
- Excellent warp and moisture resistance

Please visit our website for complete product availability



GP APEX is an ideal solution for eye-catching printed signage that needs to be lightweight and maintain its rigidity.

Premium PVC Engineered To Go Beyond



As the original expanded PVC board for the graphics industry, **SINTRA®** offers a premium, bright white surface, delivering high-quality print results, durability, and superior machinability. It's ideal for long term signage, demanding displays, and 3D applications where product properties & performance are critical. Made in the USA.

Advantages with SINTRA

- **Premium, bright white panel offers a consistent surface for excellent print results & high impact graphics**
- Superior dent and scratch resistance
- Lightweight yet rigid and durable
- Heat formable for dramatic 3-dimensional displays
- Easily machinable using wood & foam board fabrications
- Excellent chemical resistance
- Self-extinguishing; Class A (ASTM E-84) in 3mm & thinner
- UL Recognized

Please visit our website for complete product availability

The SINTRA Collection

SINTRA ECLIPSE | *The New Black*

- Solid white PVC facer over black SINTRA. Premium bright white face eliminates the need for laminating/flood-coating. Easily create a gallery-style print with dark, finished edges.

SINTRA VERS | *Expanding Versatility*

- The market standard for expanded PVC. Excellent printability, durability, and versatility across a wide range of display applications. Lighter weight & ideal for high volume projects.

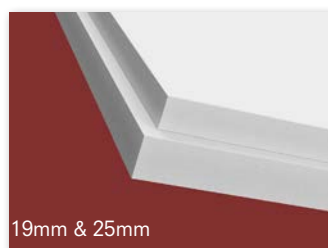
SINTRA CONSTRUCT | *Building on Quality*

- Engineered for fabrication and mechanical assembly in retail, construction, and transportation. Durable, impact-resistant, and highly resistant to chemicals & moisture absorption. Provides high staple/screw retention & easy fabrication.

NEW! SINTRA XT | *For Extended & Exterior Use*

- 19mm & 25mm gauge with added UV stabilizers for extra durability in outdoor signage, dimensional lettering, and other demanding applications. Smooth, hard surface ensures consistent results. High-quality, weather-resistant, and excellent nail/screw retention.

Please visit our website for complete product availability



19mm & 25mm



SINTRA's smooth surface ensures excellent printability and allows for premium fabrication, including heat forming, for unique, durable designs



The high durability of SINTRA makes it ideal for exterior display applications

The ultimate ACM for the display and signage markets



Bright, eye-catching murals printed on DIBOND give new life to an old warehouse; designs & photo © Ian Kirkpatrick.



As the original aluminum composite material (ACM) for the display & signage markets, **DIBOND®** is the flattest panel on the market offering premium facers for superior digital printing, mounting & fabrication performance. It brings an unmatched level of rigidity & durability, making it an excellent solution for long-term and exterior applications.



Advantages with DIBOND

- Premium surface is ideal for direct printing (2-sided) or painting
- **Provides excellent durability in exterior applications**
- Can be formed in a variety of ways to create dimensional displays
- Available in a wide range of colors and finishes
- Very good dent and scratch resistance
- Extreme stability & rigidity - won't bow or warp
- Offers a significant weight reduction compared to solid aluminum
- Self-extinguishing; Class A fire rating (ASTM E-84)

Please visit our website for complete product availability

The DIBOND Collection

DIBOND BUTLERFINISH® | Quality Meets Design

• Features an embossed, brushed metal aesthetic that adds a premium, textured look to the surface. Ideal for store design, custom furniture, & high-end displays or signage, it offers a distinctive visual appeal and delivers exceptionally unique results when direct printed, making it a standout choice for creative applications.

NEW! DIBOND Specialty Mirror Finishes | A Reflection of Quality

• Features a clear, reflective surface that delivers a high-quality mirror effect, ideal for store design and unique interior displays. Lightweight, durable & resistant to breaking & warping, it offers easier transport & install compared to conventional glass mirrors.

Please visit our website for complete product availability



Extreme durability allows for long term use in exterior applications



Create unique, impactful signage with BUTLERFINISH brushed metals



Hand-painted mural transforms the lobby & cafeteria of The Verazzano School; artwork & image © Peter Gerakaris

Have a Question?
Need Another Sample?
Want More Information?

Email **info.usa@3composites.com** or visit us
online at **www.3acompositesusa.com/display**



Scan QR code with mobile
camera to **visit our website**
and learn more



Scan QR code with
mobile camera to **order**
product samples



Scan QR code with
mobile camera to view
Product Application
Guide

